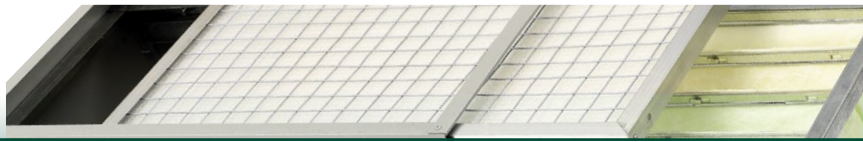


# AC Series Air Cleaners



## AC400 Two Stage Air Filter

Useful for reducing nuisance dust, particularly in small workshops. This unit provides simple single stage filtration for areas up to 113m<sup>3</sup>.

RRP £199.99

**Timer Function** Allows unit to run after workshop use.



**Maintenance** The filters are easily removable for simple cleaning or replacing.

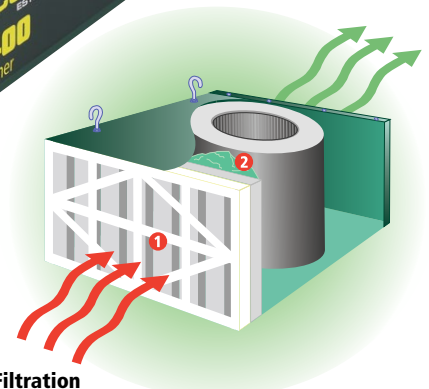


Remote control included.

**Three Speeds**



Supplied with mounting hooks and chains.



**Filtration**

Highly effective 2 stage fine filtration down to 1 micron.

### SPECIFICATIONS

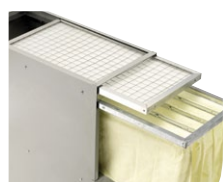
<b>FILTRATION RATE:</b> 409 CFM/Min	<b>NOISE LEVEL:</b> 69 dB
<b>MOTOR:</b> 1/8 hp	<b>WEIGHT:</b> 14 kg
<b>FILTRATION:</b> 1 Micron	<b>SIZE:</b> H258 x W431 x D514 mm

## AC2 Three Stage Air Filter

This triple stage filter offers highly effective filtering of particles down to 1 micron even in medium sized workshops (up to 212 m<sup>3</sup>).

RRP £369.99

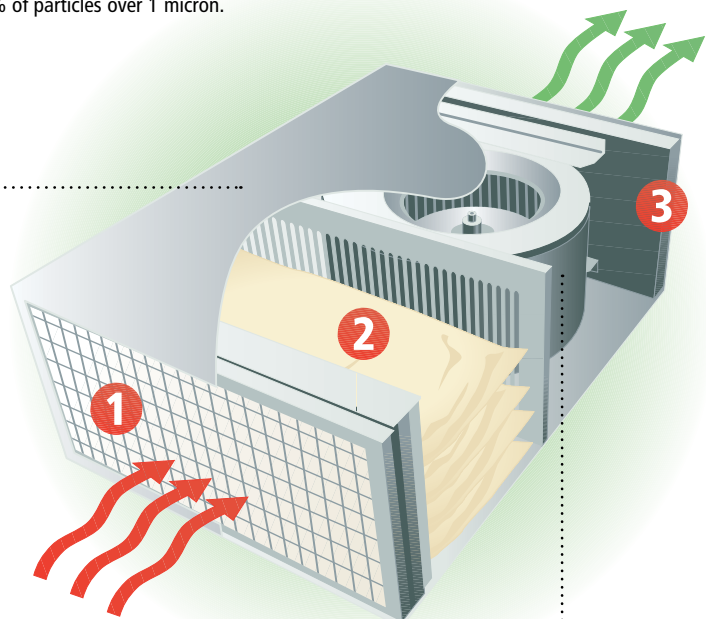
**Triple Filtration System** This filtering process is remarkably effective, removing 99% of particles over 5 microns and 91% of particles over 1 micron.



**Easy Maintenance**  
The pre-filter is washable and the main four bag filter can be easily removed and cleaned by simply shaking the accumulated dust out.



**Large Filter Surface**  
The four bag filter is intelligently designed to offer the perfect balance of surface area to collect particles, with optimum airflow to ensure waste is captured effectively.



Remote control included.



Powerful with good capacity suitable for workshops up to an area of 212 m<sup>3</sup>.

### SPECIFICATIONS

<b>FILTRATION RATE:</b> 750 CFM/Min	<b>NOISE LEVEL:</b> 79 dB
<b>MOTOR:</b> 1/4 hp	<b>WEIGHT:</b> 29 kg
<b>FILTRATION:</b> 1 Micron	<b>SIZE:</b> W605 x H310 x D865 mm

# CX2600 Dust & Chip Extractor

The CX2600 provides a versatile solution for dust collection at a very affordable price. Ideal for use with planer thicknessers and lathes, it can also provide fine dust extraction using the optional cartridge filter.

An impeller system creates a powerful airflow that sucks the dust and chippings into the collection bag and exhausts the air back into the workshop via the large top filter. The filter cleans the air and releases it back into the workshop. Featuring an extra long 2 m hose for extra reach.

RRP £179.99

## SPECIFICATIONS

**AIR FLOW:** 1150 M3 / hour  
**CAPACITY:** 80 litres  
**MOTOR:** 0.4 kW

**DIAMETER:** 330 mm  
**WEIGHT:** 25 kg  
**SIZE:** H1850 x W440 x L830 mm

**Filters** Standard canvas filter suitable as a chip collector. With optional cartridge filter suitable for chips and fine dust.

**Motor** Powerful impeller system generates enough suction to pull large chippings and waste away from the machines and into the collection bag.

**Collection Bag** Large 80 litre collection bag, making it an ideal machine for heavier use.

**Wheelkit** Is supplied with the CX2600 making it fully portable for movement around the workshop.

## OPTIONAL ACCESSORY



**CX-FC Fine Filter Cartridge**  
RRP £119.99



CX2600 shown with standard filter bag.

# CX3000 Heavy Duty Dust & Chip Extractor

The CX3000 Chip Collector is based on the highly successful Startrite industrial design and ideally suited to the demanding home workshop.

The build quality is exceptional; the steel body provides plenty of support for the heavy duty impeller fan. The machine has ample power and suction with which to perform effective extraction.

RRP £299.99

## OPTIONAL ACCESSORIES



**MDE-FC450 Fine Filtration Cartridge**  
RRP £319.99



**CX3000/A Plastic Collection Bag**  
RRP £3.99



**CX3000/B Canvas Filter Bag**  
RRP £29.99



**Heavy Duty Steel Impeller** Attached to a powerful induction motor, this gives the performance and robustness usually found only on industrial machines.



**Suitable for Use with Wall Mounted Systems** The motor unit can be inverted to allow the machine to power a workshop extraction system.

**Collection Bag** Is an impressive 128 litres. Additionally, the collection bag can be emptied more easily than a drum extractor, making it an ideal machine for heavier use.

**Stand** The machine is mounted on a sturdy steel trolley-stand, making it easy to move around the workshop if necessary.



## SPECIFICATIONS

**AIR FLOW:** 1200 m3/hour  
**CAPACITY:** 128 litres  
**MOTOR:** 0.6 kW

**DIAMETER:** 450 mm  
**WEIGHT:** 32 kg  
**SIZE:** L940 x H1930 x W500 mm